

Login Method: IMEI / ID

Contents

1. Sign in.....	2
2. APP functions and parameter bar.....	3
2.1 Paramete bar.....	3
2.1 How to track.....	4
2.2 How to get historical route.....	6
2.3 How to set Geo-fence.....	7
2.4 How to send commands.....	8
2.5 More.....	9
3. How to customize alert and notification options.....	10
4. Top up Spionlink SIM Card.....	11
5. Download instructions, SMS commands and protocols.....	12
6. Fine the FAQ.....	12

1. Sign In


How to login by device IMEI/ID?

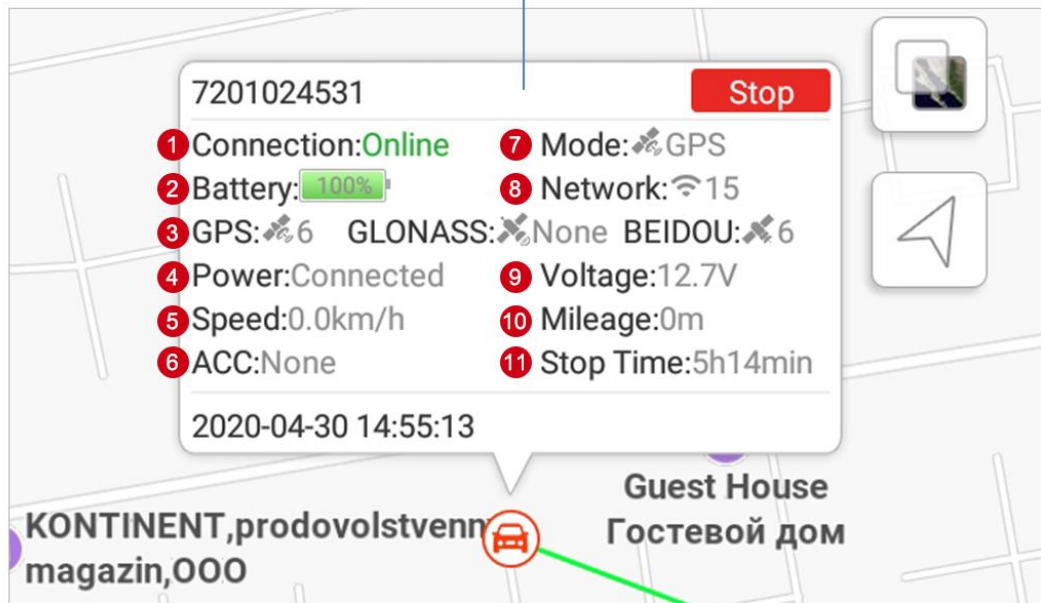
The screenshot shows the Micodus login interface. The top section is a red banner with the 'micodus' logo. Below this, there are three input fields for login credentials. The first field is labeled 'IMEI/ID' and is highlighted with a dashed blue box. The second field is labeled 'Device IMEI/ID' and has a QR code icon to its right. The third field is labeled 'Password...' and has an eye icon to its right. Below these fields is a red 'Log in' button. At the bottom of the screen, there are links for 'Remember Me', 'Forgot Password', 'A Map', and 'Demo'.

Tap **IMEI/ID** to input or scan the IMEI or ID number that on the device. The default password is 123456.

2. APP Function and Parameter Bar

2.1 Parameter bar

Tap the parameter bar to close it, click the  icon to open it.



1 The device is online and stand by to receive the control commands.

2 Device battery

3 It is receiving signals from 6 GPS and 6 Beidou satellites. The bigger the number, the higher the accuracy. (GLONASS: None) means that device nonsupport GLONASS.

4 External power supply is connected well.

5 When device is in moving status, here shows a real-time speed.

6 ACC status (None means that device doesn't have ACC detection function)

7 Now it's GPS mode

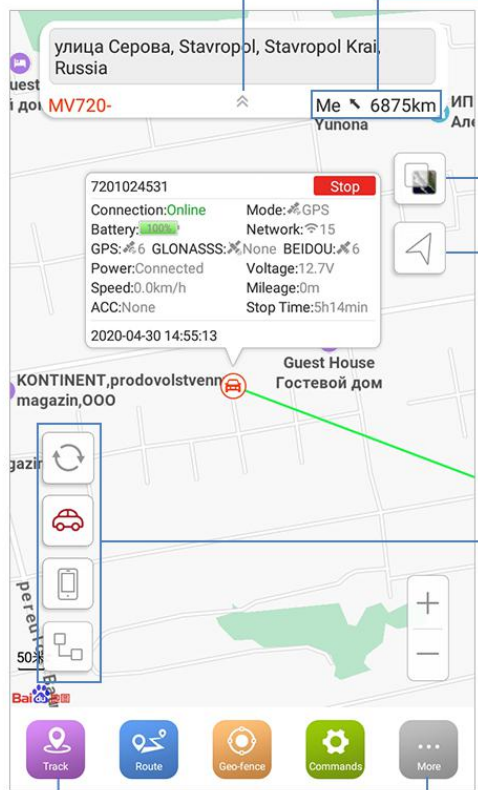
8 In current mode, the signals score is 15. The bigger the number, the stronger the signal.

9 Real-time voltage of the car

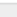
10 Mileage starts counting the distance that a vehicle has travelled when you get into this page, measured in meters. Just for reference only.

11 The time since the last moving status

2.2 How to track




The screenshot shows a navigation app interface. At the top, there is an address bar with the text "улица Серова, Stavropol, Stavropol Krai, Russia" and a location pin icon. Below the address bar, a status bar shows "Me 6875km" and "Yunona". A central information panel displays details for a tracked device: "7201024531", "Connection: Online", "Mode: GPS", "Battery: 100%", "Network: 15", "GPS: 6 GLONASS: None BEIDOU: 6", "Power: Connected", "Voltage: 12.7V", "Speed: 0.0km/h", "Mileage: 0m", "ACC: None", "Stop Time: 5h14min", and "2020-04-30 14:55:13". A red "Stop" button is visible in the top right of this panel. The map shows a green area representing a geo-fence and a red car icon. A vertical toolbar on the left contains icons for refresh, car location, phone location, and distance measurement. The bottom navigation bar includes "Track", "Route", "Geo-fence", "Commands", and "More" buttons.


Click  to pick up or open the address bar.


The device is located in the north of me, 6875km away.
Tips: This feature ask for phone location access permission, you can allow it by the phone Setting.


Switch to satellite map

Go to the navigation APP


Tap  to refresh the location

Tap  to get device loaction on the map

Tap  and the blue point means your phone location.


Tap  and the line means the distance between your phone and the car.

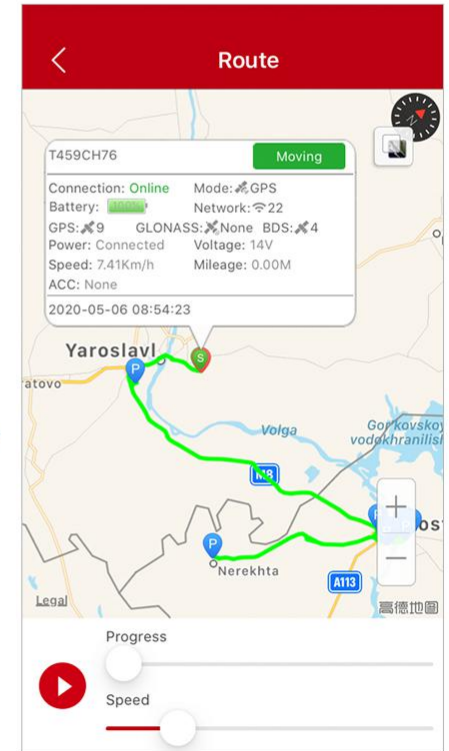
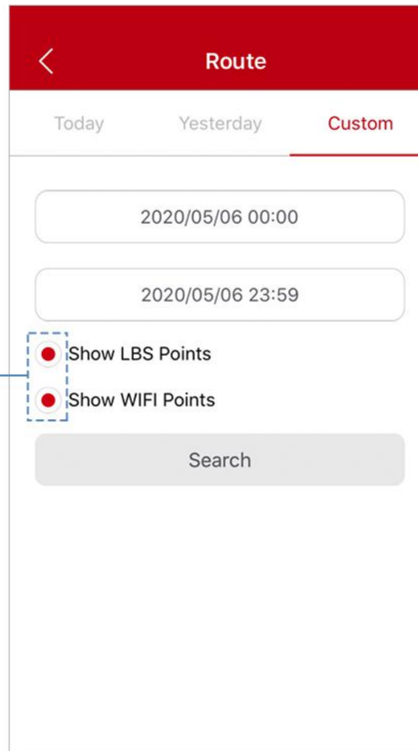
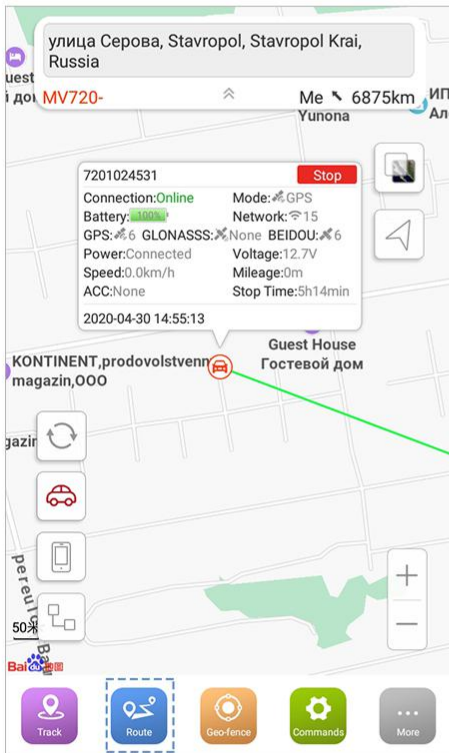
Go to setting more

Tap  to refresh the location.

2.3 How to get historical route

Save or filter out LBS/WIFI positioning data.

 Tips: LBS positioning accuracy is 100–1000m, which might cause a remarkable discrepancy. Filter out LBS data could get a more reliable history route.

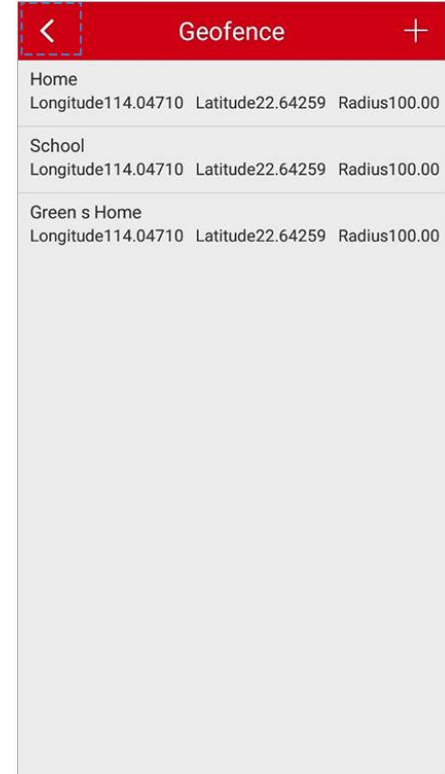
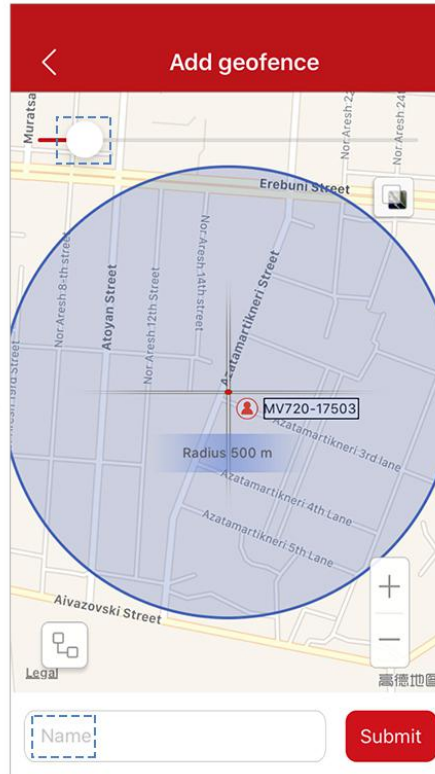
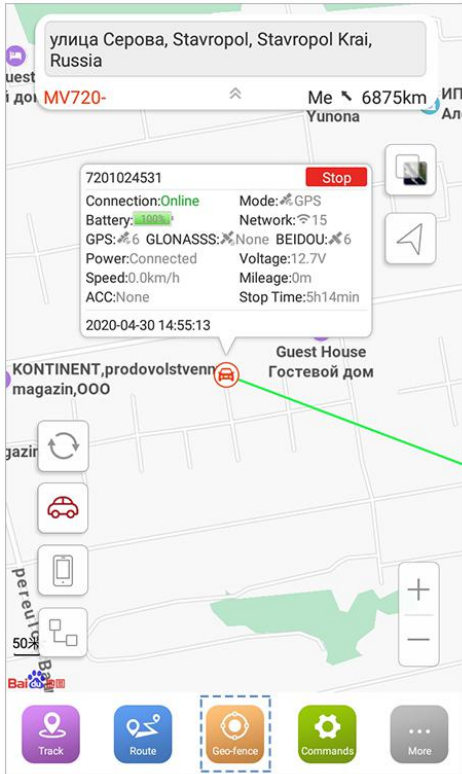


The app could only check **1** day rote.
If you need 3 months rote, go to <http://micodus.net>

Taping  shows you the route of your vehicle(s) in the past with a **dynamic view**.

2.4

How to set geo-fence



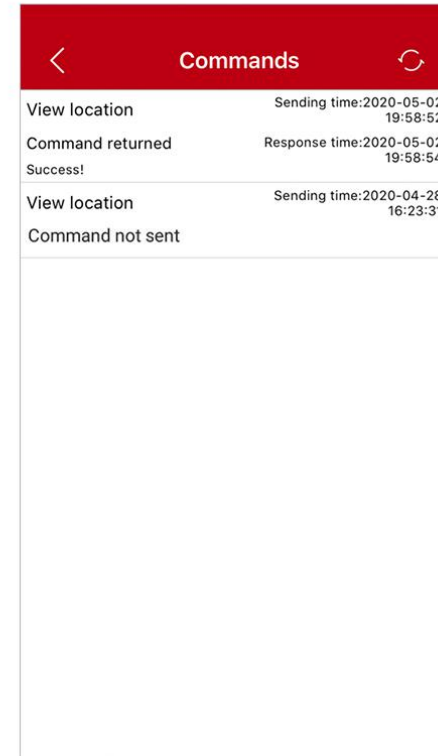
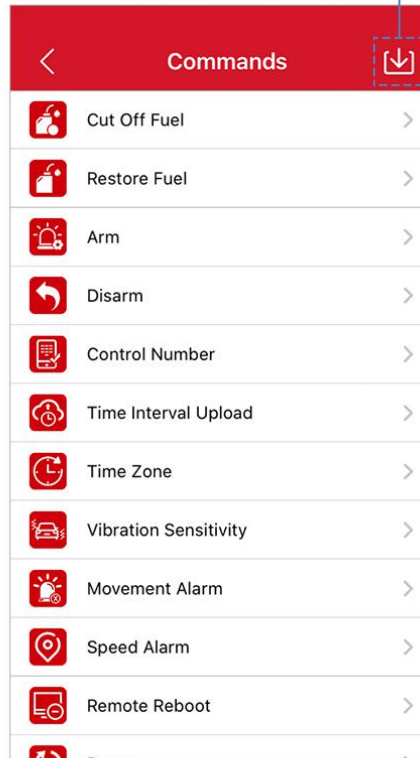
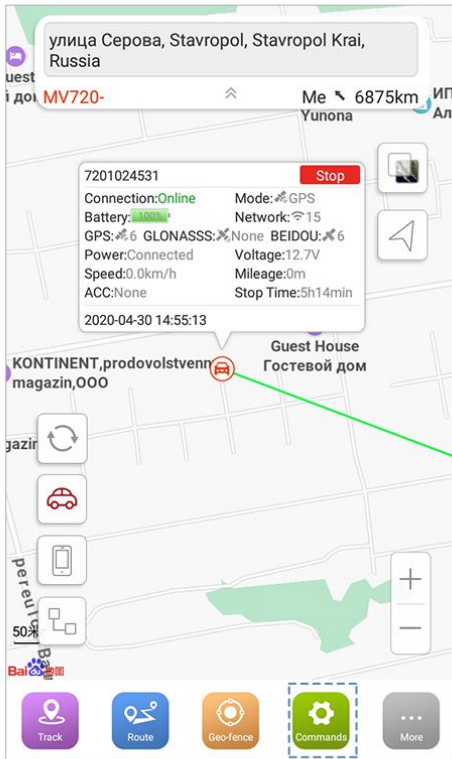
1. **Drag** around the map and then use the sliding bar to **adjust** the Geofence size.
2. Give it a name, then hit the Submit button at the bottom.


If you set Geo-fences already, you'll see them here. Tap "+" to add a new one.

2.5

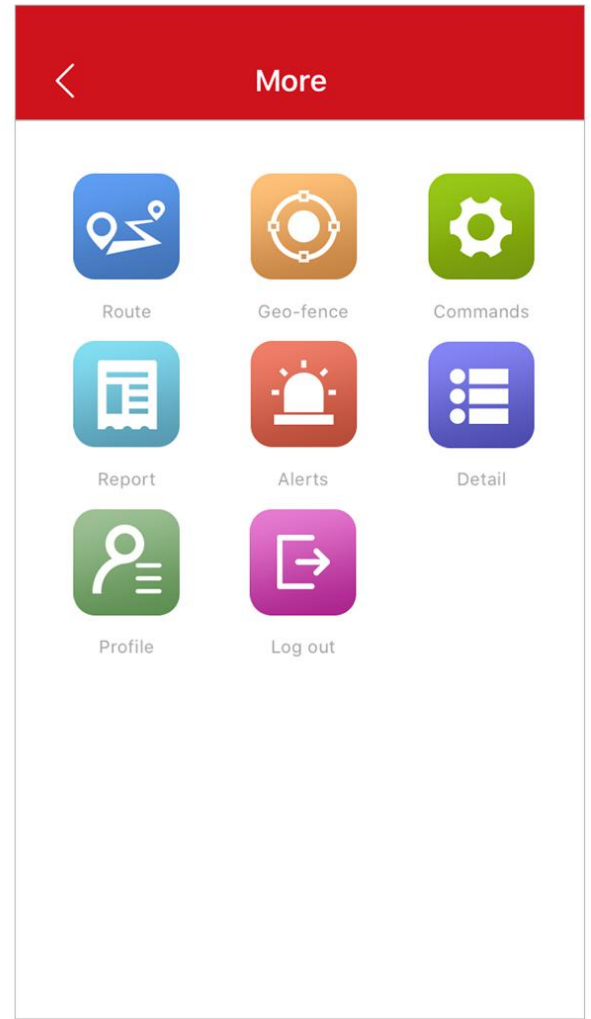
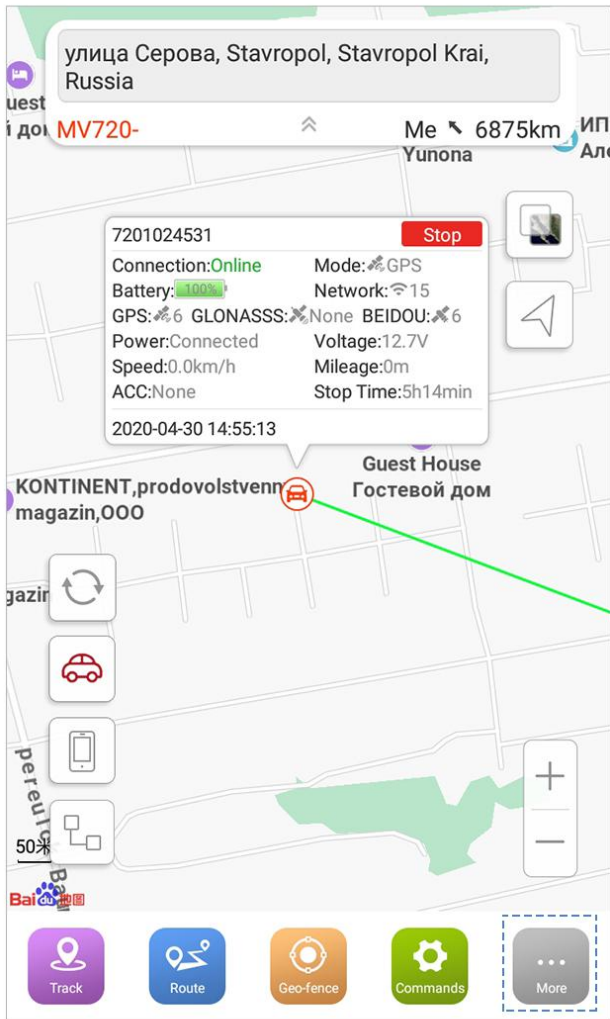
How to send commands


Check the the result of commands sending.



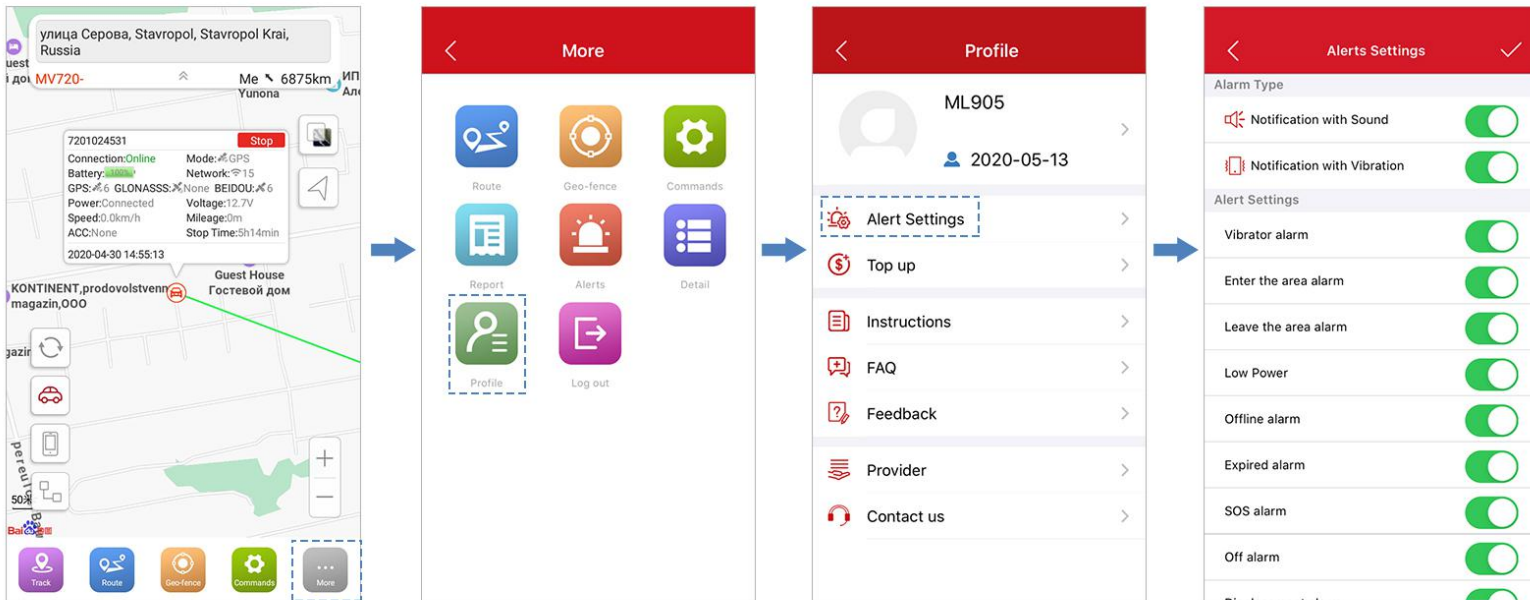
Commands  - choose command option - save

2.6 More



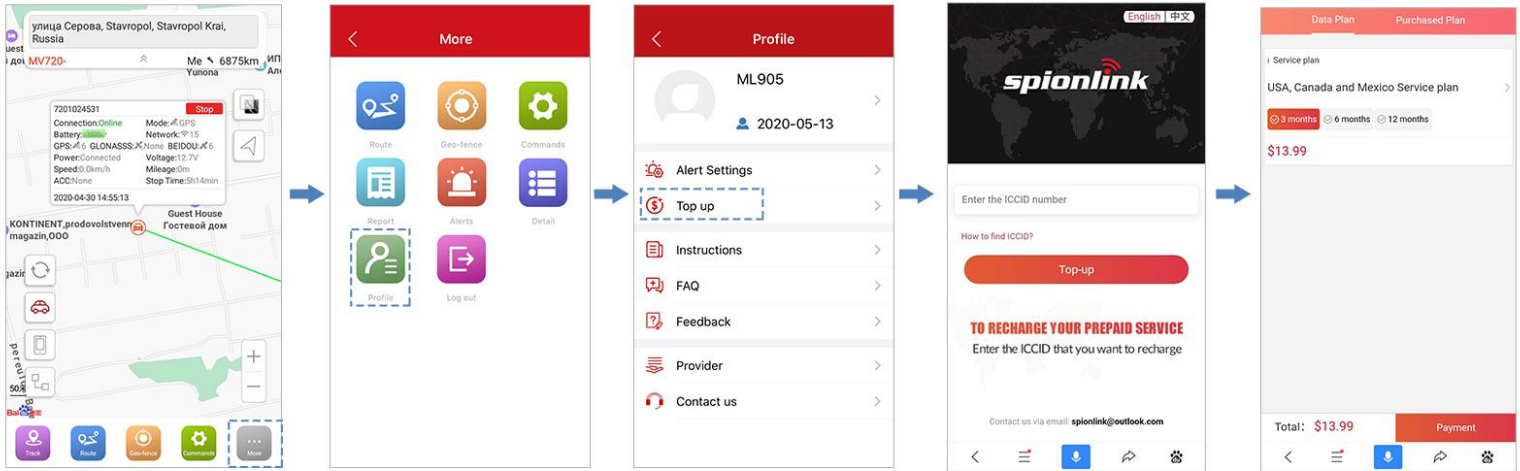
More  - go to setting more

3. How to Customize Alert and Notification Options



More  - **Profile**  -  **Alerts settings**

4. Top Up Spionlink SIM Card



More - **Profile** - **Top up** - enter ICCID- choose data plan - checkout



Tips:Where to find ICCID?



5. Download Instructions, SMS Commands and Protocols

6. Fine the FAQ

Download instructions, SMS commands and protocols

Fine the FAQ

Share your feedback and ideas about MiCODUS APP, your idea means a lot to us!

Contact us to solve the product problem, make a order, get a coupon... We will always here to listen to you.

